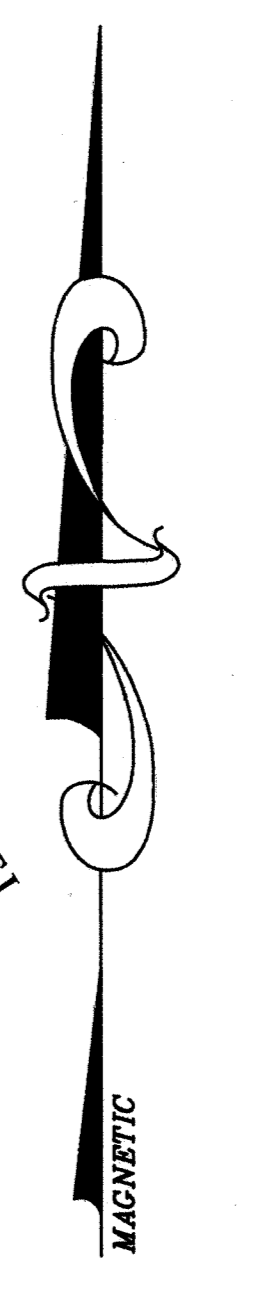


SHADOW LAKES UNIT III

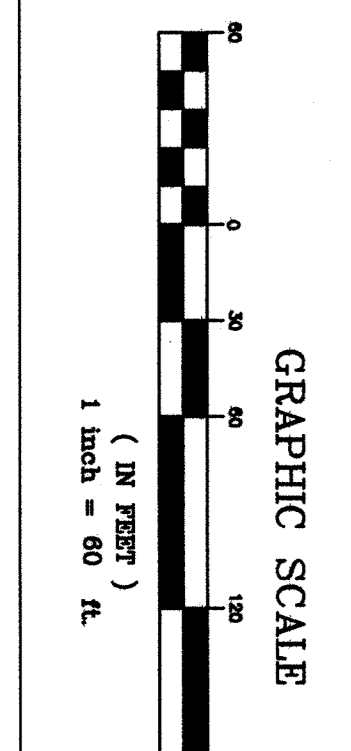
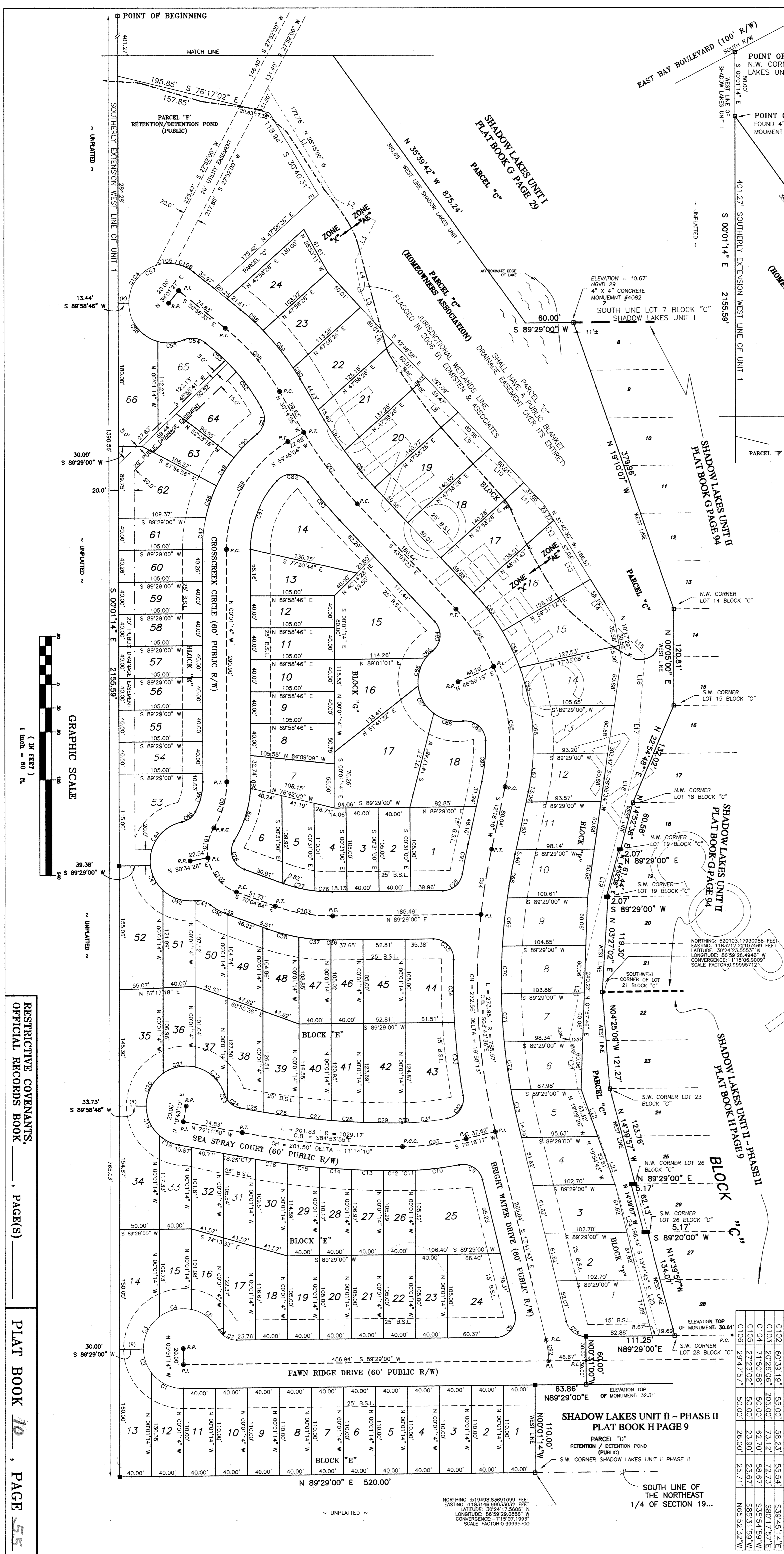
A PATIO HOME SUBDIVISION OF A PORTION OF SECTION 19, TOWNSHIP 2 SOUTH, RANGE 27 WEST SANTA ROSA COUNTY, FLORIDA, JULY, 2006

SHEET 2 OF 2



Professional Surveyor & Mapper
 Pamplin, Florida 32256
 Phone: (850) 465-1675 Fax: (850) 941-4966

CURVE	DELTA	RADIUS	LENGTH	CHORD	CHORD BEARING	CURVE	DELTA	RADIUS	LENGTH	CHORD	CHORD BEARING	CURVE	DELTA	RADIUS	LENGTH	CHORD	CHORD BEARING	CURVE	DELTA	RADIUS	LENGTH	CHORD	CHORD BEARING
C1	57.0748°	50.00'	46.36'	44.72'	S62.2720°E	C26	02.3627°	999.17'	45.47'	45.47'	S81.4820°E	C51	85.0520°	25.00'	37.13'	33.81'	N08.7274°E	C76	07.1042°	175.00'	21.92'	21.91'	S88.5539°E
C2	3.527246°	50.00'	31.74'	31.21'	S62.2720°E	C27	02.1820°	999.17'	40.21'	40.21'	S84.1827°E	C52	15.1238°	26.00'	69.22'	69.07'	N43.7974°W	C77	13.1525°	175.00'	40.49'	40.40'	S78.4236°E
C3	53.7344°	50.00'	46.80'	45.11'	S27.1477°W	C28	02.1753°	999.17'	40.08'	40.07'	S86.3334°E	C53	06.4220°	28.00'	72.70'	72.50'	N47.5733°W	C78	10.1325°	175.00'	44.36'	38.76'	S19.1506°E
C4	48.2454°	50.00'	42.24'	41.00'	S77.1477°W	C29	02.0483°	999.17'	48.97'	48.97'	S89.0045°E	C54	06.2105°	25.00'	27.13'	25.82'	N82.0401°W	C79	18.1006°	140.00'	69.07'	68.37'	S12.2659°E
C5	50.0856°	50.00'	43.76'	42.48'	N53.2433°W	C30	00.4133°	318.38'	3.95'	3.85'	N89.0013°E	C55	38.4348°	50.00'	33.80'	33.16'	N86.1228°E	C80	03.1900°	140.00'	8.14'	8.14'	N01.3841°E
C6	21.4849°	50.00'	9.52'	9.46'	S31.4300°E	C31	09.2851°	318.38'	3.95'	3.85'	N89.0013°E	C56	37.4510°	50.00'	33.80'	33.16'	N86.1228°E	C81	03.1900°	140.00'	8.14'	8.14'	N01.3841°E
C7	40.2205°	25.00'	17.61'	17.25'	S70.1937°E	C32	8.9153°	25.00'	38.55'	35.13'	N44.4247°E	C57	12.9015°	50.00'	112.60'	90.27'	S37.1305°E	C82	00.3059°	250.00'	43.88'	38.45'	N86.3800°W
C8	10.1043°	25.00'	45.02'	45.02'	N37.5339°E	C33	06.2842°	91.81'	91.81'	S06.4138°E	C58	10.6562°	320.72'	38.86'	38.83'	N47.5019°W	C83	10.4531°	530.00'	41.80'	41.77'	N05.4307°E	
C9	87.3151°	25.00'	38.19'	34.59'	N87.5738°W	C34	9.2351°	25.00'	78.80'	78.80'	S00.4202°E	C59	10.4511°	320.72'	16.97'	16.97'	N31.4555°W	C84	14.2616°	250.00'	40.98'	36.55'	N03.5432°E
C10	08.2130°	378.38'	55.20'	55.15'	N87.5738°W	C35	9.2351°	25.00'	40.40'	36.14'	N44.4247°E	C60	10.4511°	320.72'	16.97'	16.97'	N31.4555°W	C85	14.2616°	250.00'	40.98'	36.55'	N03.5432°E
C11	02.2104°	378.38'	15.53'	15.52'	N88.1828°E	C36	00.3428°	235.00'	2.36'	2.36'	N89.0045°E	C61	05.3248°	470.00'	45.48'	45.48'	S33.0120°E	C86	42.1703°	50.00'	36.90'	36.07'	S15.1739°W
C12	01.1928°	1059.17'	24.48'	24.48'	N88.1828°E	C37	09.4805°	235.00'	40.20'	40.15'	N89.0045°E	C62	07.1539°	470.00'	59.56'	59.52'	S39.2520°E	C87	46.4238°	50.00'	40.76'	39.64'	S29.1211°E
C13	02.0954°	1059.17'	40.02'	40.02'	S88.0635°E	C38	10.0034°	235.00'	41.26'	41.21'	S75.0016°E	C63	10.2720°	278.36'	50.34'	50.27'	N26.4943°W	C88	44.3258°	50.00'	38.88'	37.90'	S74.4958°E
C14	02.1010°	1059.17'	40.24'	40.24'	S88.0635°E	C39	10.0034°	235.00'	41.26'	41.21'	S75.0016°E	C64	10.2720°	278.36'	50.34'	50.27'	N26.4943°W	C89	44.3258°	50.00'	38.88'	37.90'	S74.4958°E
C15	02.1037°	1059.17'	40.24'	40.24'	S88.0635°E	C40	16.3542°	85.00'	1.65'	1.65'	S69.3128°E	C65	10.7839°	278.36'	60.21'	60.09'	N25.0501°W	C90	13.3444°	218.36'	51.81'	51.63'	N09.3048°E
C16	02.1151°	1059.17'	40.44'	40.44'	S88.0635°E	C41	45.1827°	25.00'	19.27'	19.26'	N75.0106°W	C66	09.5014°	278.36'	60.21'	60.09'	N25.0501°W	C91	13.1043°	218.36'	38.28'	38.26'	N07.0621°W
C17	01.1145°	1059.17'	22.42'	22.42'	S75.5133°E	C42	49.4454°	50.00'	43.41'	42.06'	S72.0012°E	C67	09.5014°	278.36'	60.21'	60.09'	N25.0501°W	C92	13.1043°	218.36'	38.28'	38.26'	N07.0621°W
C18	31.4043°	50.00'	27.64'	27.29'	S63.2629°E	C43	40.2553°	50.00'	35.28'	34.56'	S76.5449°E	C68	04.1308°	755.97'	55.66'	55.64'	S10.1137°W	C93	13.1043°	218.36'	80.13'	79.95'	N07.5239°E
C19	47.3453°	50.00'	41.52'	40.34'	S23.4841°E	C44	84.4808°	50.00'	74.00'	67.43'	S35.4211°W	C69	04.3435°	755.97'	60.36'	60.37'	S05.4746°W	C94	06.1407°	755.97'	82.69'	82.65'	N08.1720°W
C20	54.5072°	50.00'	47.95'	46.14'	S23.4841°E	C45	50.1349°	25.00'	21.92'	21.22'	N52.5920°E	C70	04.3313°	755.97'	60.09'	60.07'	S03.1911°E	C95	35.2750°	248.36'	153.73'	151.28'	N05.2546°W
C21	48.0540°	50.00'	41.97'	40.25'	S78.5638°W	C46	82.7540°	80.00'	38.95'	38.56'	N1.3551°W	C71	04.3313°	755.97'	60.09'	60.07'	S03.1911°E	C96	19.5343°	248.36'	86.24'	85.81'	N33.0642°E
C22	58.5041°	50.00'	52.22'	49.88'	N47.0312°W	C47	12.2508°	185.94'	40.36'	40.28'	S06.1150°W	C72	04.3313°	755.97'	60.50'	60.50'	S07.5322°E	C97	12.4827°	250.00'	111.77'	111.53'	S36.3910°E
C23	18.1024°	25.00'	52.22'	7.93'	S26.1303°E	C48	12.5056°	185.94'	41.80'	41.71'	S18.5117°W	C73	03.3042°	755.97'	46.33'	46.33'	S11.5622°E	C98	20.4337°	290.72'	105.17'	104.60'	N40.3645°E
C24	43.2831°	25.00'	18.97'	18.92'	S57.0230°E	C49	12.5056°	185.94'	41.80'	41.71'	S18.5117°W	C74	76.4917°	25.00'	33.52'	31.06'	S52.0621°E	C99	58.4618°	155.94'	162.67'	155.40'	N40.3645°E
C25	01.4304°	999.17'	29.96'	29.96'	S78.3818°E	C50	12.5138°	185.94'	41.74'	41.65'	S44.5426°W	C75	79.3203°	25.00'	34.85'	32.10'	N49.3259°E	C100	31.3556°	110.00'	60.67'	59.80'	N15.0444°E



RESTRICTIVE COVENANTS,
 OFFICIAL RECORDS BOOK _____, PAGE(S) _____

PLAT BOOK 10, PAGE 55